



Marine Dancer B&B space capsule



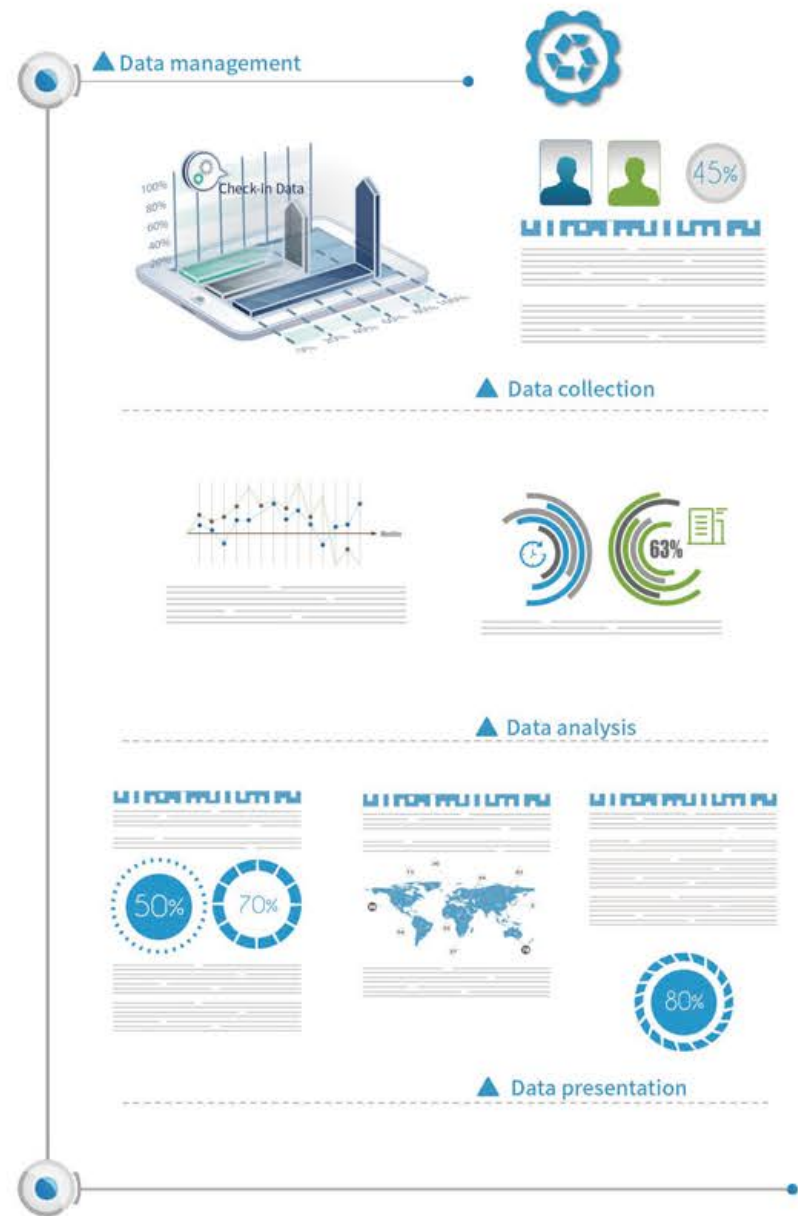
DIGITAL MANAGEMENT PLATFORM



▲ Outdoor intelligent check-in center control screen (10.1 inches)

▲ Whole house intelligent center control screen

The Accommodation Space Capsule Occupancy Management System is an innovative and intelligent integrated service management platform that offers customers convenient services such as ordering, check-in, intelligent equipment interaction, and room service. It aims to provide customers with a more comfortable, stylish, convenient, and technologically advanced stay experience. In the pursuit of quality and appreciation for life, it combines science and technology with humanities to create a cozy living environment that encompasses multiple dimensions of B&B tourism.





The digital integrated management platform offers comprehensive digital management services for the operation and administration of B&B space capsules. A modular management system is established, with equipment management, room status management, and reservation service as its core components, specifically designed for the B&B space capsule scene.

Client APP

Self-service check-in machine

Indoor terminal

Backstage Management

The platform offers comprehensive customization services, providing essential O&M configuration tools to cater to individual device configuration requirements. Diverse customized scenarios are implemented throughout the entire capsule, enabling customers to effortlessly set up and manage a wide range of smart devices, thus achieving seamless integration for a fully automated smart home experience.



Client APP

The APP offers convenient and efficient management for managers, enabling them to promptly access data on store equipment, room status, orders, and more with clear details.



Self-service registration machine

The self-service check-in machine integrates the processes of booking check-in, non-booking check-in, opening, renewal, and check-out into a unified system, enabling seamless and fully automated self-service operations.



Indoor terminal

The intelligent environment adjustment, lighting control, and intelligent curtain control can be remotely operated to effortlessly create a technologically advanced smart lifestyle.



Background management

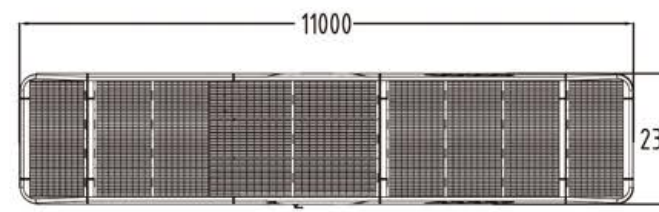
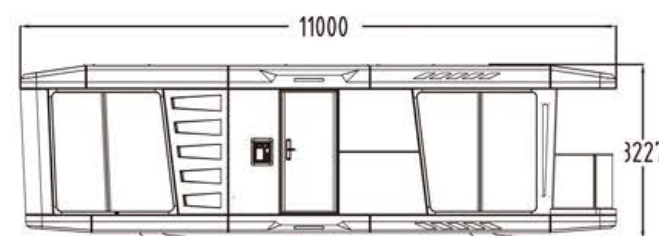
The system encompasses various management functions, including room management, scenario management, pricing management, room status data analysis, and generation of intelligent reports. The system encompasses various management functions, including room management, scenario management, pricing management, room status data analysis, and generation of intelligent reports.



FD01-K

PRODUCT INTRODUCTION

The FD01-K capsule of the Marine Dancer is equipped with various power sources, including grid power, solar power, wind power and gasoline engine emergency power. Additionally, it features a 28.64 KWH energy storage system.





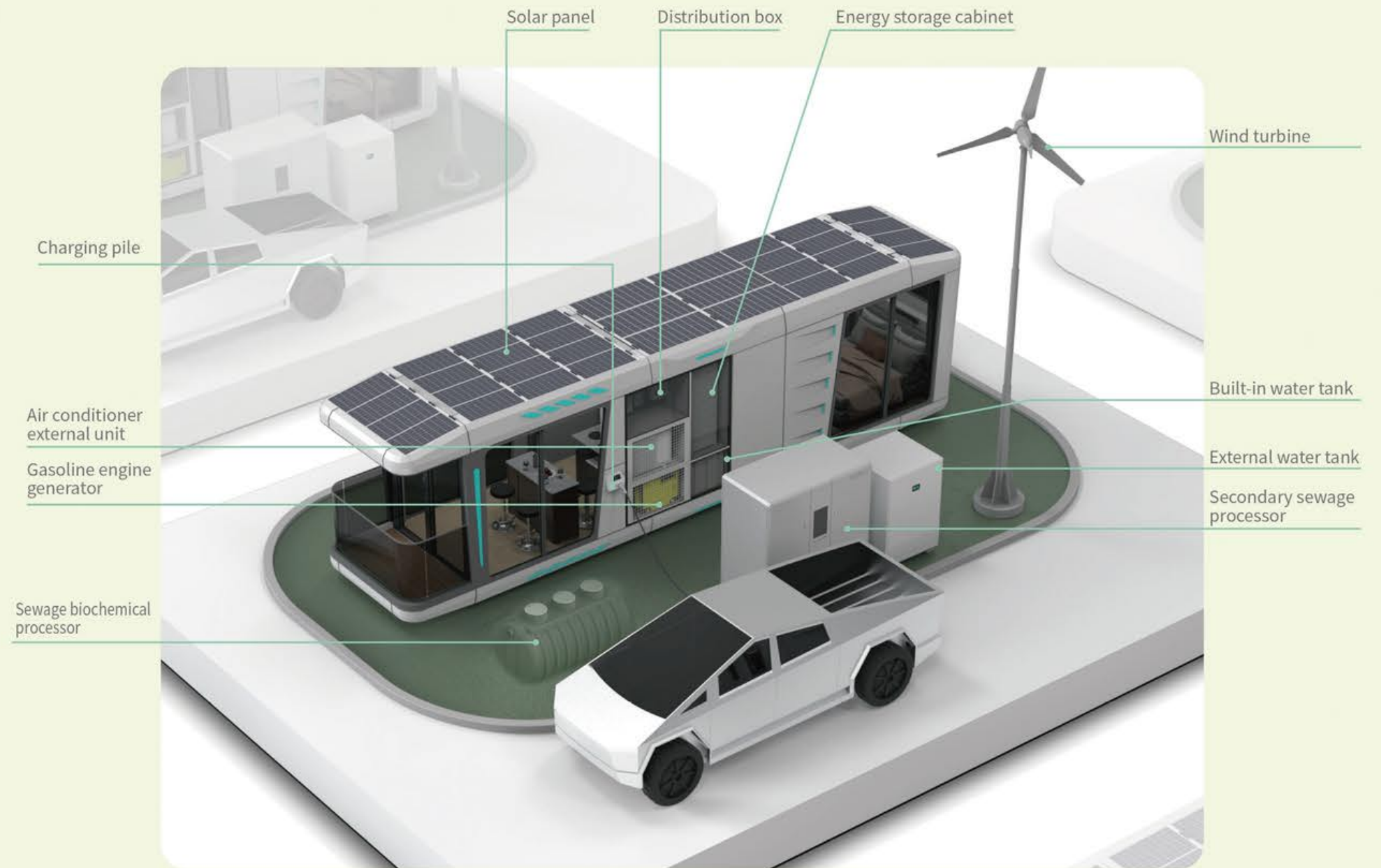
Enhanced green energy power generation system:

1. The product is equipped with a 2KW solar PV system, and an additional 2KW solar PV system is reserved. If the project site has the potential for further expansion of solar power generation, the user can independently access it.
2. It is also equipped with a wind power generation system, generator power generation system, new energy vehicle discharge system, and mains power system.
3. The energy storage cabinet has a capacity of 28KWh and is capable of self-charging with its remaining power.
4. By default, the solar power system takes precedence over the wind power system. The discharge options for mains, generators, and new energy vehicles can be selected independently. Additionally, an energy storage cabinet serves as backup when there is no external power source.



STANDARD FUNCTION

- | | |
|--------------------------|---------------------------------|
| 1 Switch box | 2 Electric cabinet |
| 3 Wind power inverter | 4 Solar power inverter |
| 5 Energy storage cabinet | 6 Air conditioner external unit |
| 7 Electric generator | 8 Water tank |

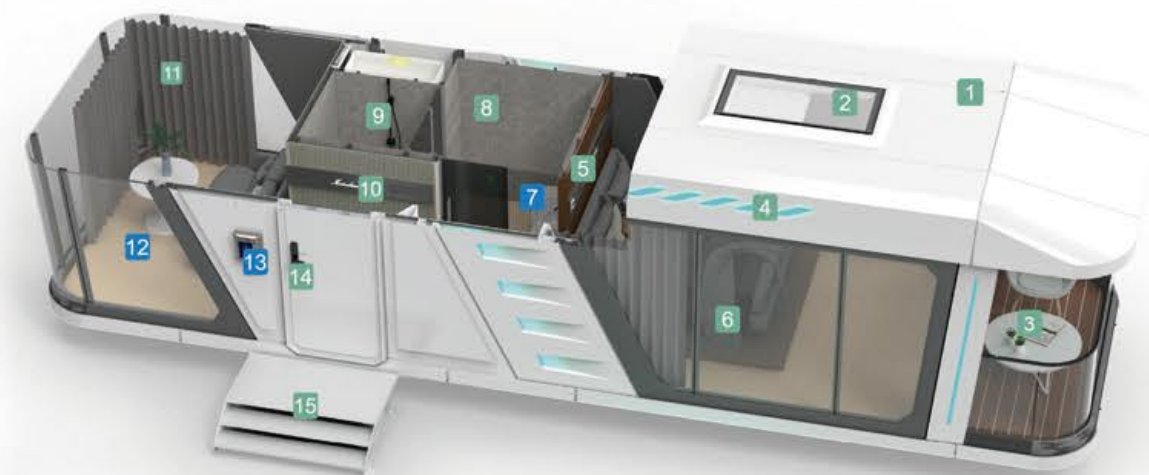




FD01

PRODUCT INTRODUCTION

The Space Capsule FD01 seamlessly combines futuristic aesthetics with cutting-edge technology, featuring a sleek galvanized steel frame and an aluminum alloy shell that exudes elegance. Its intuitive smart home system offers seamless access to information and entertainment at your fingertips. Equipped with essential living amenities, the panoramic balcony provides a "zero distance" connection with nature from every angle.



STANDARD FUNCTION

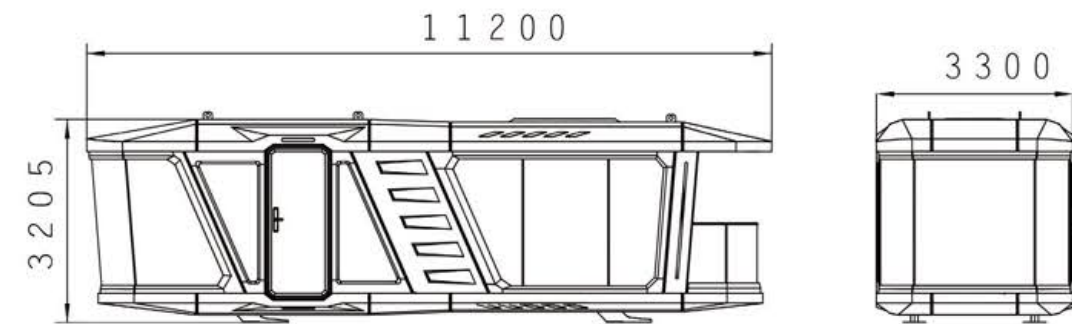
- 1 Galvanized decorative panel
- 2 Panoramic sunroof
- 3 Panoramic balcony
- 4 Ambient light
- 5 Xiaomi laser projector
- 6 Fine furnished bedroom
- 8 Eco-friendly decoration
- 9 Shower
- 10 Whole-house intelligent home system
- 11 Electric curtain
- 14 Outdoor smart lock
- 15 Entrance steps

OPTIONAL FUNCTION

- 7 Intelligent toilet
- 12 Graphene underfloor heating
- 13 Intelligent check-in center control screen (10.1 inches)



The cabin frame is constructed using galvanized pipe, and the surface coating of the frame utilizes an integral spraying process, significantly enhancing its anti-corrosion performance.

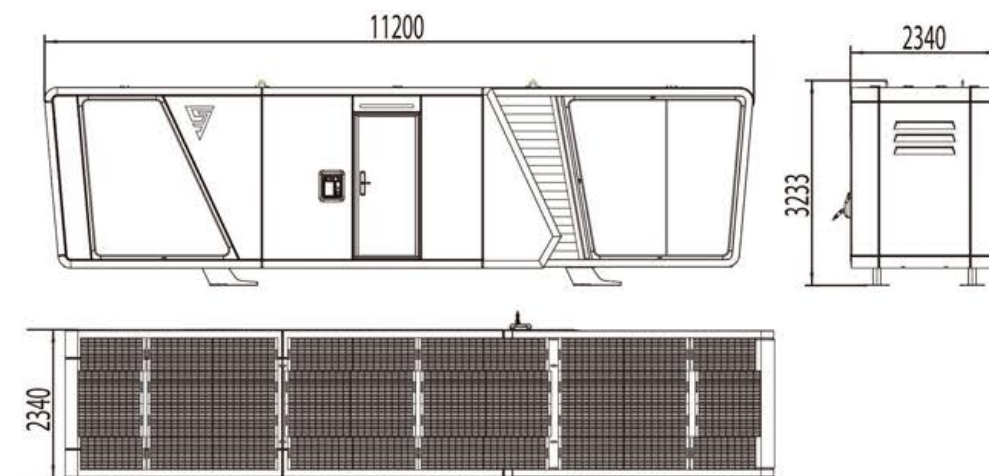




EC01-K

PRODUCT INTRODUCTION

This highly versatile house is ideal for family vacations, featuring a fully covered roof with 2KW solar panels and an additional reserved capacity of 2KW for easy integration of more solar panels. It boasts a robust green energy power generation system that includes wind power generation, generator power generation, new energy vehicle discharge, mains access, and a 28KWh energy storage cabinet to ensure uninterrupted power supply in any situation. The indoor multi-functional area offers complete facilities including a master bedroom, separate dry and wet toilets, a bar, kitchen, laundry drying area, balcony, etc. The large panoramic toughened glass provides enhanced safety and security while the sun conservatory can be enjoyed by simply opening the curtains – offering infinite brilliance and endless delight.



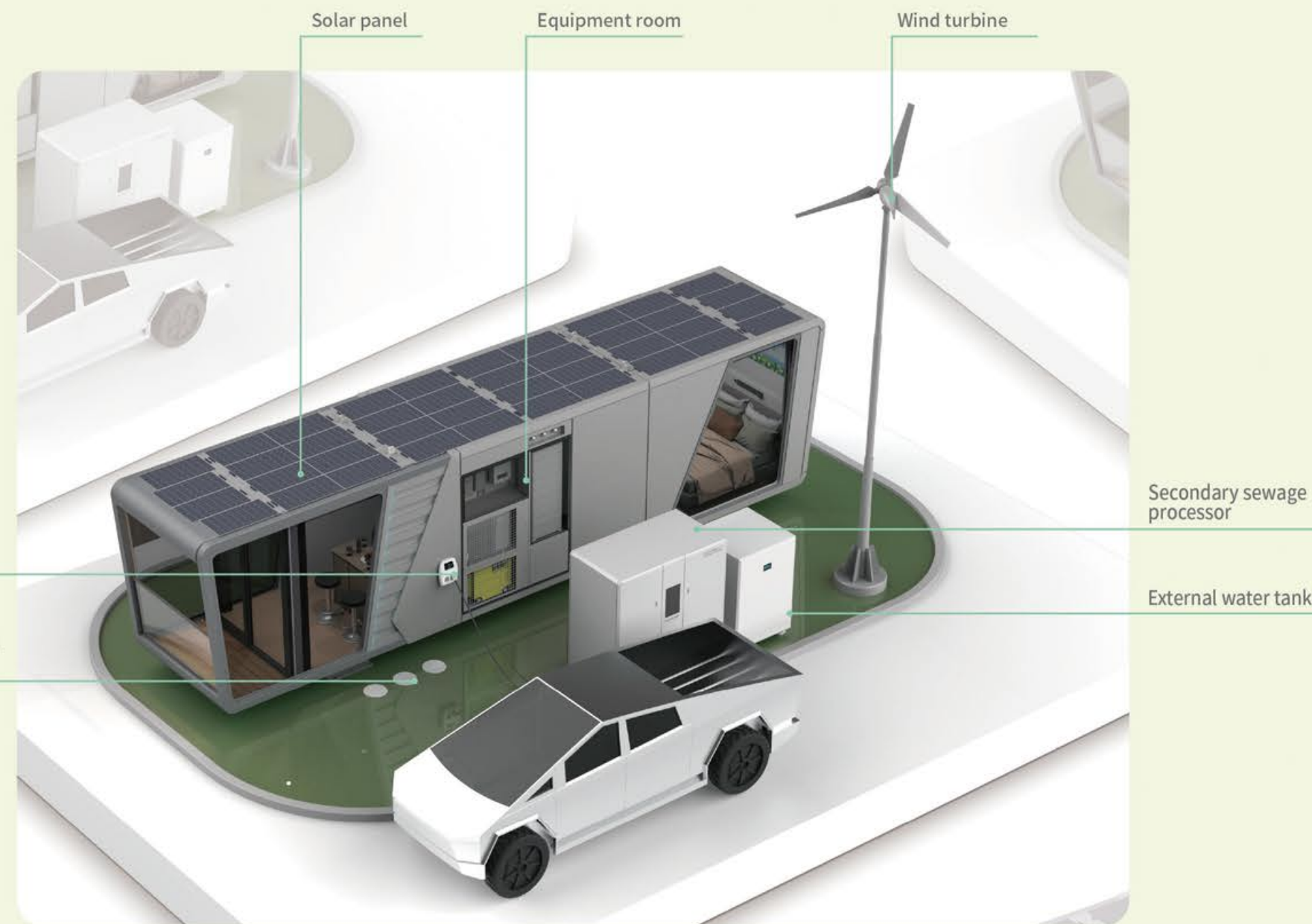


Enhanced green energy power generation system:

1. The product is equipped with a 2KW solar PV system, and an additional 2KW solar PV system is reserved. If the project site has the potential for further expansion of solar power generation, the user can independently access it.
2. It is also equipped with a wind power generation system, generator power generation system, new energy vehicle discharge system, and mains power system.
3. A 28KWh energy storage cabinet is available to store excess energy for self-charging purposes.
4. By default, the solar power system takes precedence over the wind power system. The discharge options for mains, generators, and new energy vehicles can be selected independently. Additionally, an energy storage cabinet serves as backup when there is no external power source.

STANDARD FUNCTION

- | | |
|--------------------------|--------------------------------|
| 1 Switch box | 2 Electric control box |
| 3 Wind power inverter | 4 Solar energy inverter |
| 5 Energy storage cabinet | 6 air conditioner outdoor unit |
| 7 Electrical generator | |

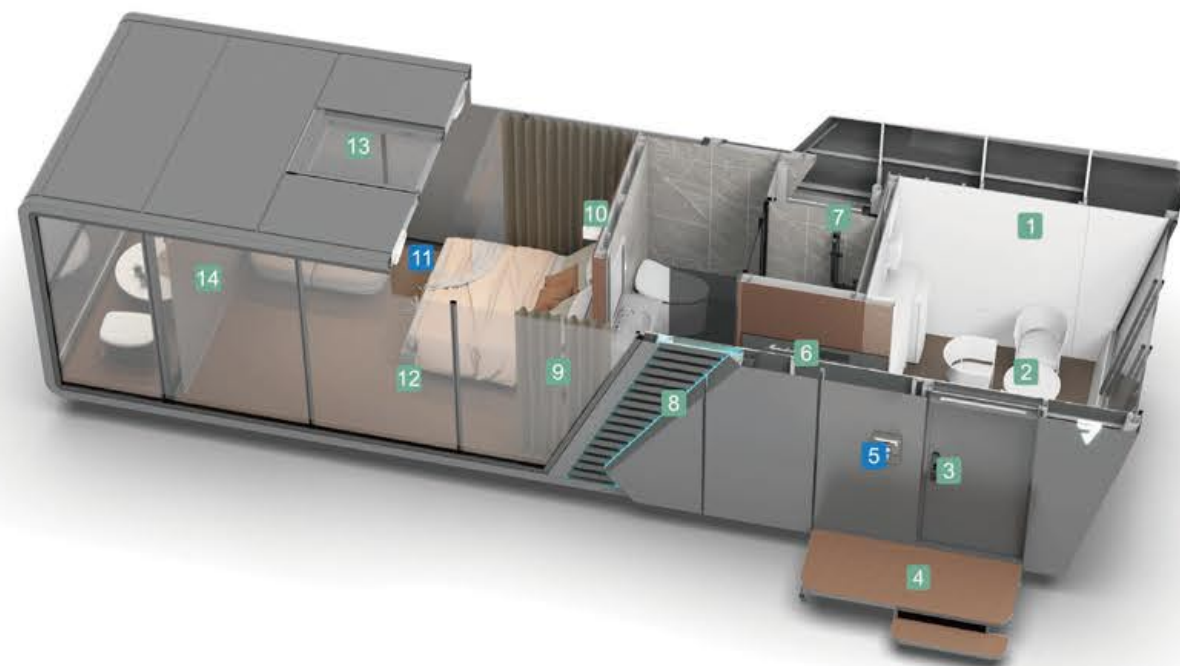




EC01

PRODUCT INTRODUCTION

The EC01 space capsule boasts a sophisticated and elegant design, offering an expansive panoramic balcony that allows you to indulge in nature's most exquisite wonders at any given moment. Equipped with a comprehensive smart home system, this capsule ensures intelligent regulation and provides visual data display, enhancing your journey with unparalleled comfort and convenience. You will be pleasantly surprised to discover that abundance can also be breathtakingly beautiful.



STANDARD FUNCTION

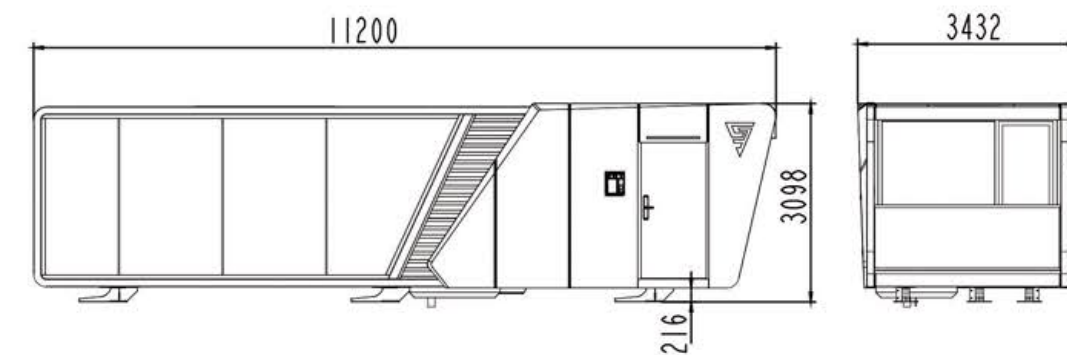
- | | |
|---------------------------------------|---------------------------------------|
| 1 Galvanized decorative panel | 8 Ambient light |
| 2 Panoramic balcony | 9 Electric curtain |
| 3 Outdoor smart lock | 10 Xiaomi laser projector |
| 4 Entrance steps | 12 Wide-view floor-to-ceiling windows |
| 6 whole-house intelligent home system | 13 Panoramic sunroof |
| 7 Shower | 14 2-in-1 electric sunshade curtain |

OPTIONAL FUNCTION

- | |
|--|
| 5 intelligent check-in center control screen (10.1 inches) |
| 11 Graphene underfloor heating |



The cabin frame is constructed using galvanized pipe, and the surface coating of the frame utilizes an integral spraying process, significantly enhancing its anti-corrosion performance.





DR11

PRODUCT INTRODUCTION

Space capsule DR11, based on a childhood dream, to create a romantic starry sky series, a large intelligent panoramic skylight, the sky and the river can be seen, the ring cabin, bring you a sense of security like embrace. Smart home integrated control system, in any location in the room, you can feel the meticulous details.

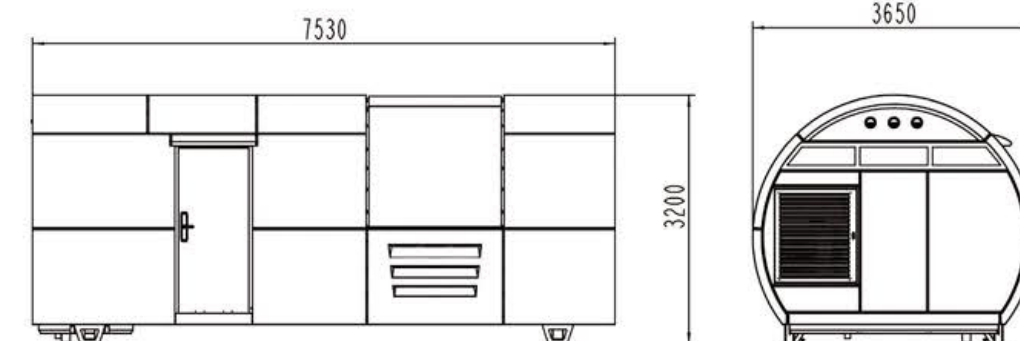


STANDARD FUNCTION

- | | |
|--------------------------------------|-----------------------------------|
| 1 Wide field of vision french window | 8 Shower |
| 2 Galvanized decorative panel | 9 High capacity water heater |
| 3 Arc panoramic sunroof | 11 Fresh air system |
| 4 Electric curtain | 12 Dry and wet separated bathroom |
| 5 Ambient light | 13 Outdoor smart lock |
| 7 Intelligent center control system | 14 Entrance ladder |

OPTIONAL FUNCTION

- | | |
|-------------------------------|--|
| 6 Graphene underfloor heating | 10 Whole house intelligent center control screen |
|-------------------------------|--|





UF07

PRODUCT INTRODUCTION

The UF07 space capsule, an exceptionally innovative spherical module, boasts a sleek and sophisticated design. Despite its compact size, this sparrow-like marvel is equipped with a comprehensive array of amenities including fully-furnished dry and wet separation bathroom facilities, an elegantly curved automatic skylight for enhanced visual experience, an integrated smart home system that offers seamless connectivity, allowing you to indulge in the abundance of outdoor pleasures.



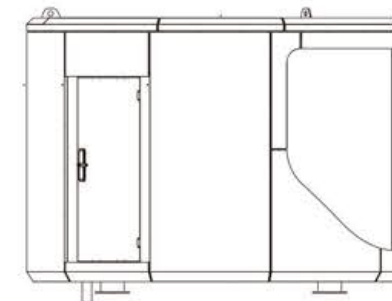
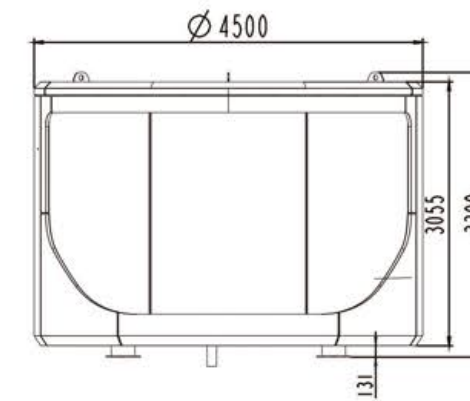
STANDARD FUNCTION

- 1 wide-view floor-to-ceiling windows
- 2 Electric curtain
- 3 Ventilation system
- 4 Air conditioner
- 5 Ambient light
- 8 Outdoor smart lock
- 9 Toilet
- 10 Shower
- 11 Switchroom

OPTIONAL FUNCTION

- 6 Whole house smart control screen
- 7 Graphene underfloor heating

The cabin frame is constructed using galvanized pipe, and the surface coating of the frame utilizes an integral spraying process, significantly enhancing its anti-corrosion performance.





FD02

PRODUCT INTRODUCTION

Revolving around the re-creation of the FD01 series, Space Capsule FD02 exudes an unparalleled aura of uniqueness and exclusivity with its cutting-edge scientific and technological appearance. Moreover, it boasts enhanced sophistication in space exploration, accompanied by a comprehensive range of supporting functionalities. The trinity of intelligent living environments further contributes to the creation of a private and exclusive sanctuary.



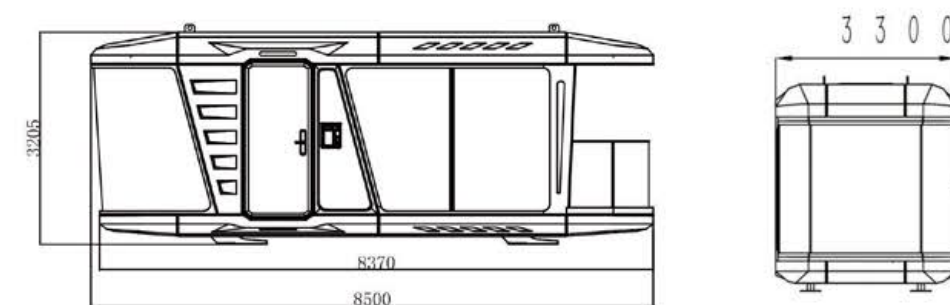
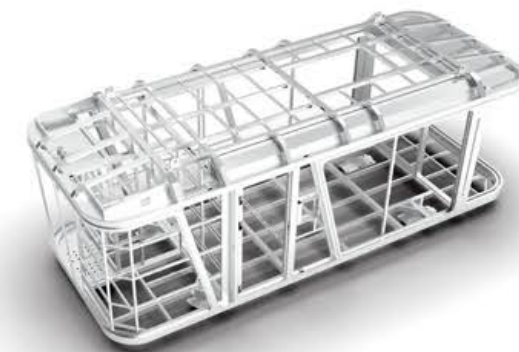
STANDARD FUNCTION

- | | |
|-------------------------------|-------------------------------|
| 1 Galvanized decorative panel | 9 Eco-friendly decoration |
| 2 Panoramic balcony | 11 Intelligent mirror cabinet |
| 3 panoramic sunroof | 12 Ventilation system |
| 4 Ambient light | 13 Shower |
| 5 Electric curtain | 14 Outdoor smart lock |
| 7 Counter cabinet | 15 Entrance steps |

OPTIONAL FUNCTION

- | |
|--|
| 6 Graphene underfloor heating |
| 8 Intelligent check-in center control screen (10.1 inches) |
| 10 Whole house intelligent center control screen |

The cabin frame is constructed using galvanized pipe, and the surface coating of the frame utilizes an integral spraying process, significantly enhancing its anti-corrosion performance.





SK03

PRODUCT INTRODUCTION

The SK03 space capsule features a sleek design and an intelligent check-in control system, providing you with a sophisticated home experience. With its luxurious bathroom and multi-angle ultra-wide vision window, you can immerse yourself in nature while still enjoying the comforts of home. Whether surrounded by mountains or rivers, you will discover that moonlight becomes even more gentle and meteors shine brighter.



STANDARD FUNCTION

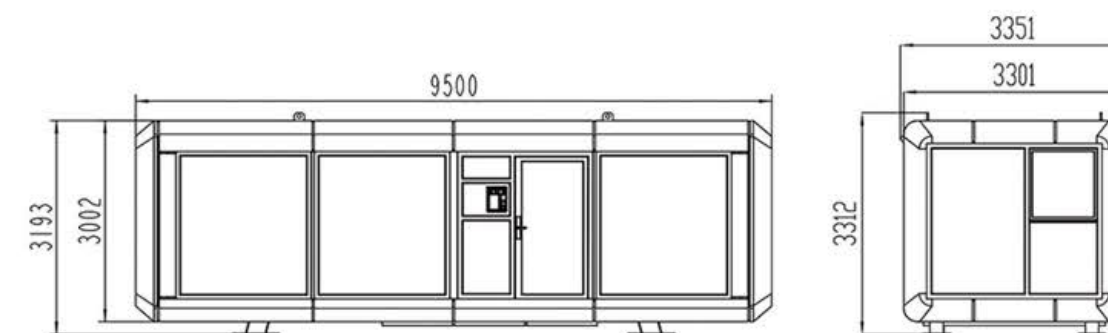
- 1 Galvanized decorative panel
- 2 Panoramic balcony
- 3 Shower
- 4 Whole-house intelligent home system
- 5 Toilet
- 7 Intelligent mirror cabinet
- 8 Xiaomi laser projector
- 9 Eco-friendly interior decoration
- 10 2-in-1 electric sunshade curtain
- 12 Wide-view floor-to-ceiling windows
- 13 Outdoor smart lock
- 14 Entrance steps

OPTIONAL FUNCTION

- 6 Intelligent check-in center control screen (10.1 inches)
- 11 Graphene underfloor heating



The cabin frame is made of galvanized pipe, and the surface coating of the frame adopts the integral spraying process, which greatly enhances the anti-corrosion performance.





Mini-s

PRODUCT INTRODUCTION

The space capsule is designed with a simplistic structure and has a service life of up to 50 years. It features walls that are thickened to 150mm, incorporating an insulation layer made of polyurethane material. The keel is constructed using hot-dip galvanized steel pipes, ensuring durability through full welding and anti-rust paint coating. With excellent security and privacy measures in place, the door lock utilizes an anti-theft AI intelligent system. Additionally, the capsule is equipped with a comprehensive smart home system for convenient usage.

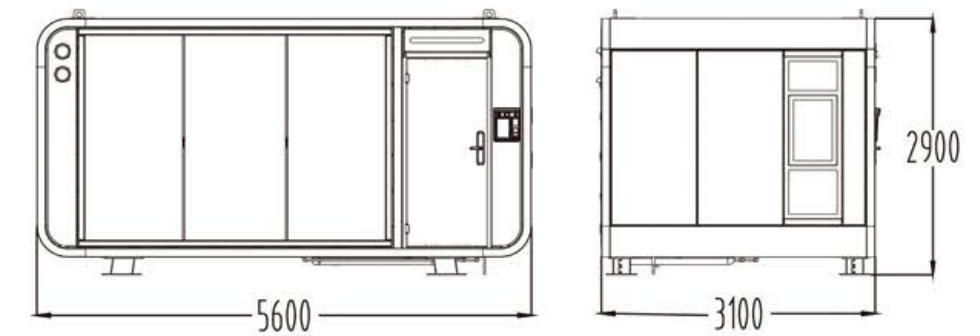


STANDARD FUNCTION

- 1 Shower
- 2 Storage cabinet
- 4 Outdoor smart lock
- 5 Toilet
- 6 Air conditioner
- 7 Ventilation system
- 9 Liquid Crystal Display Television (55 inches)
- 10 Ambient light
- 11 Wide-view floor-to-ceiling windows
- 12 Entrance steps

OPTIONAL FUNCTION

- 3 Intelligent check-in center control screen (10.1 inches)
- 8 Graphene underfloor heating





DOUBLE

PRODUCT INTRODUCTION

The space capsule DOUBLE boasts a romantic ambiance and elegant atmosphere, creating a cozy home-like environment that caters to both family and casual settings. With its spacious second-floor terrace offering breathtaking views of the surroundings, it's perfect for stargazing or setting up a tent to fulfill your wildest fantasies.



(First floor)



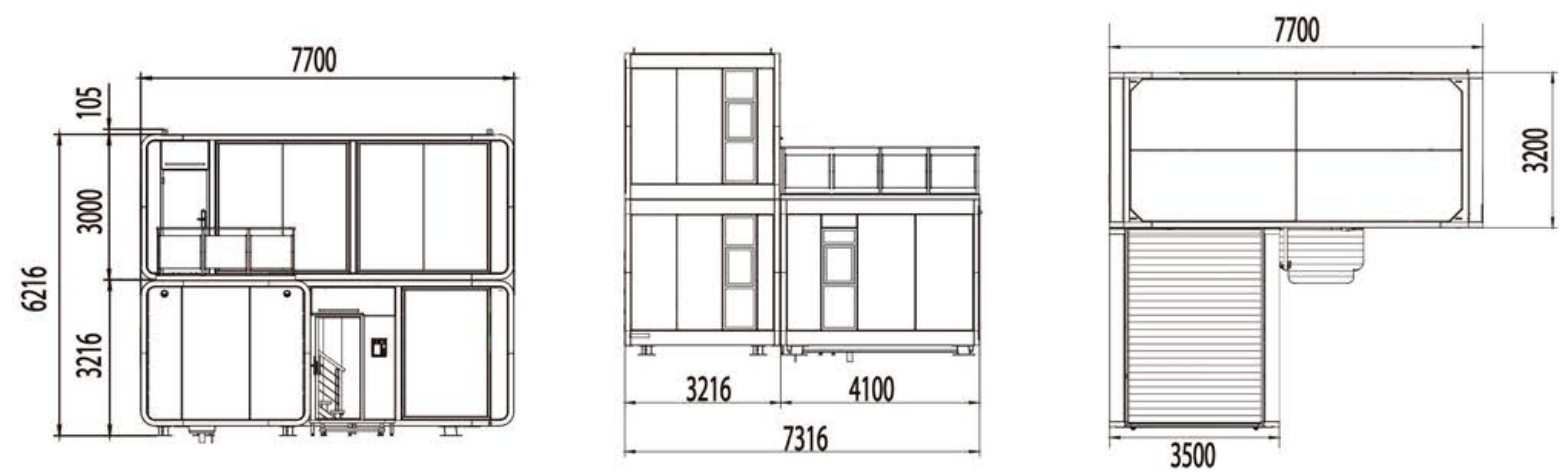
(Second floor)

STANDARD FUNCTION

- 1 Entrance steps
- 2 Liquid Crystal Display Television (55 inches)
- 3 Intelligent check-in center control screen (10.1 inches)
- 4 Graphene underfloor heating
- 5 Stairway
- 6 Toilet
- 7 Shower
- 8 Kitchen hood
- 9 Intelligent storage cabinet
- 10 Air conditioner
- 11 Wide-view floor-to-ceiling windows
- 12 Open balcony
- 13 Sunshade

OPTIONAL FUNCTION

- 3 Intelligent check-in center control screen (10.1 inches)
- 4 Graphene underfloor heating



R&D Team Introduction

● WONDERFUL R&D team

The WONDERFUL R&D team is comprised of passionate and creative professionals from various fields, including structural modeling design and development, software system platform development, hardware program development, production process design and development, and mold design and development. With 85% of the team consisting of advanced research and development personnel who possess rich experience and skills, our focus remains on innovation and technology leadership. Over the course of 26 years in innovation and development, we have obtained more than 600 patents as well as high-end technology research results through in-depth technical cooperation with renowned institutions such as KKY Group in the United States, DWDD Laboratory in the United States, University of Lincoln in the United Kingdom, China University of Mining and Technology. Moving forward, WONDERFUL will continue to adhere to innovative ideas and thinking to create even more fruitful scientific achievements.



▲ Xuzhou Economic Development Zone Structure Technology Research and Development Center



Located in Xuzhou Tongshan District hardware and software research and development center

WONDERFUL Technical consultant



Zhigang Wang

Technical Consultant at WONDERFUL Enterprise

- Education: Ph.D. in Fine Arts from the Shanghai Theatre Academy, China
- Professional Experience: Mentor in Stage Art Design at the Shanghai Theatre Academy, Senior Researcher at the China Space and Visual Arts Association. Contributed creative design expertise to various projects encompassing brand identity, poster design, and innovative advertising. Delivered lectures and participated in seminars on international art design. Personal artworks showcased in multiple museums and galleries.
- Accolades: Awarded the MUSE Award (2006), Germany's Red Dot Product Design Award (2012), and Japan's GMARK Design Award (2018).



David Bramston

Technical Consultant for the Capsule House Project at WONDERFUL Enterprise

- Education: Ph.D. in Materials Science from the University of Lincoln, United Kingdom
- Professional Background: Professor at the University of Lincoln, Head of MAIDE MA International Design Organization, Mentor for the Three-Dimensional Innovative Design Master's Program.
- Academic Contributions: Published over 20 papers in esteemed international journals such as RSC Advances, Journal of Power Sources, Advanced Materials, etc.
- Social Influence: Invited multiple times to deliver keynote speeches at the European Materials Research Society Annual Conference.
- Honors and Accolades: Recognized with the "New York Technology Innovation Award for Structural Innovative Practical Technologies," "Materials Research Society Award," and various other international distinctions. Named one of the "25 Most Influential Experts in the Global Polymer Materials Field."

Enterprise profile

WONDERFUL was established in 1997, with its main factory located in Xuzhou City, Jiangsu Province Economic and Technological Development Zone on Baogang Road No. 1. The factory covers an area of 210,000 square meters (317 acres). Over the past 26 years, through continuous innovation and steady development, the company has built a leading domestic software and hardware research and development team, structure research and development team, brand marketing management team, five-star after-sales team, as well as modern production equipment and advanced production technology. In order to establish itself as a high-tech and high-quality intelligent equipment brand, WONDERFUL has engaged in extensive technical cooperation with Lincoln University and DWDD Laboratory in the UK to lay a solid foundation for its rapid growth. Currently, WONDERFUL Enterprise's "Delanshi MARINE DANCER" brand products have obtained over 600 patents and achieved significant advancements in cutting-edge technology.

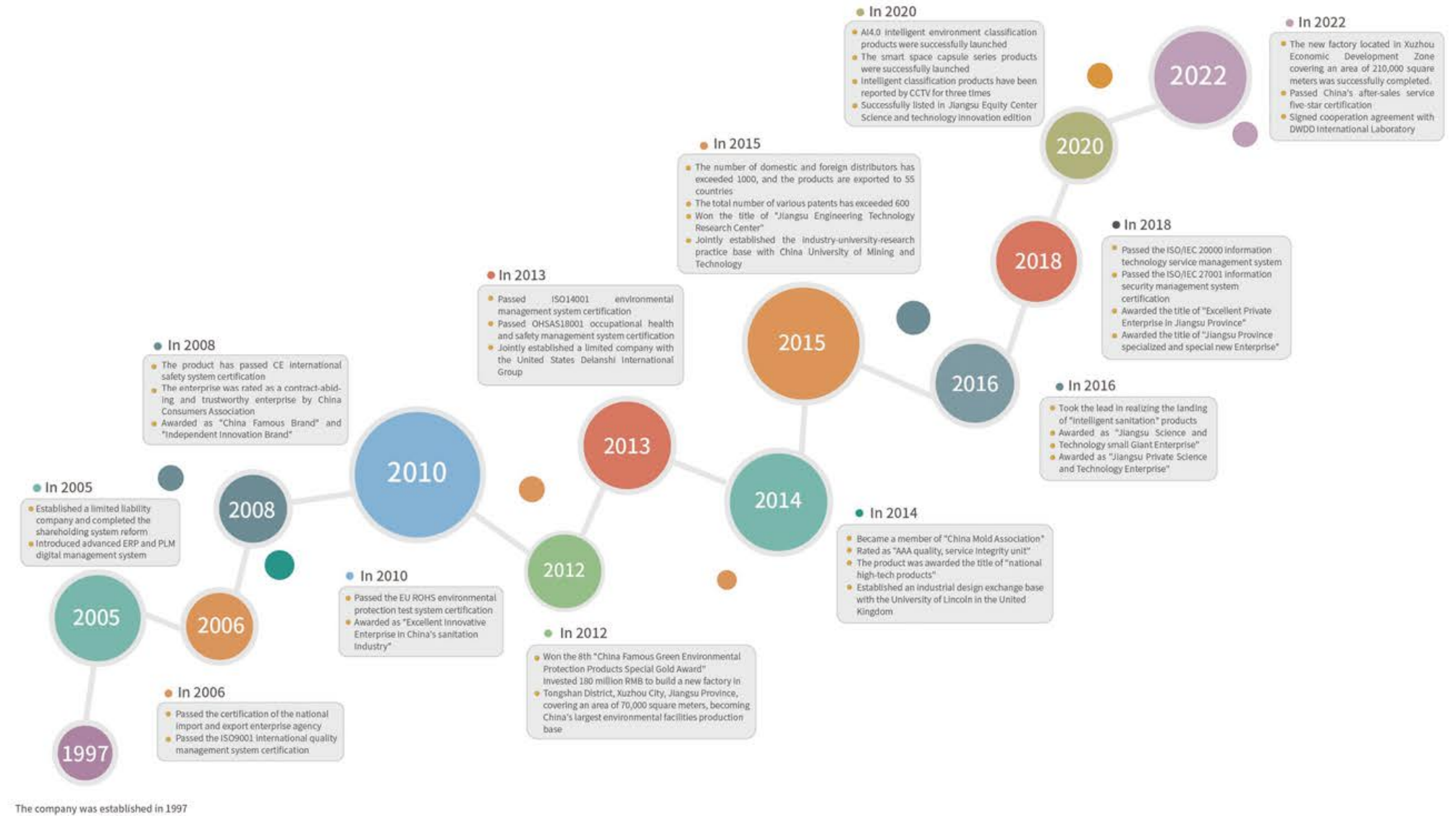
WONDERFUL's subsidiaries include Jiangsu Wandefu Intelligent Equipment Co., Ltd., Jiangsu Delanshi Environmental Technology Co., Ltd., Jiangsu Delanshi Electronic Technology Co., Ltd., and Jiangsu Delanshi Biotechnology Co., Ltd. These subsidiaries are dedicated to researching, developing, and manufacturing series products related to new energy sources, environmental protection solutions, and cultural tourism.

MARINE DANCER products are distributed across all provinces (29) and autonomous regions of China as well as being exported to 56 countries worldwide. With a robust sales network supported by comprehensive after-sales services, the company ensures the delivery of top-notch quality products while maintaining its leading market position within the industry.



Aerial view of WONDERFUL Factory

Company history







WONDERFUL



江苏万德福智能装备有限公司

JIANGSU WONDERFUL INTELLIGENT EQUIPMENT CO., LTD



+8615996938812 (Sales hotline)

+8618852188093



www.marine-dancer.com

The text and pictures of this publication may not be reproduced without permission.
All rights reserved. In the event that the product deviates from the description in this
volume due to technical updates, the company reserves the right for final
interpretation.



WhatsApp



ISO9001:2015

ISO14001:2015

ISO20000:2011

GB/T 22080-2016/ISO/IEC 27001:2013

RoHS AAA CMA EX

ISO27001:2013

ISO45001:2018